





An illustration of several bats hanging upside down from a tree branch. The bats have grey wings and orange-brown fur. The background is a night sky with a yellow-orange glow at the bottom, suggesting a sunset or sunrise. There are green bushes at the bottom and several small black silhouettes of bats flying in the air.

# CONTENTS

- 4. About Me
- 6. Greeting Cards
- 10. Notebooks
- 14. Kitchenware
- 16. *Mugs*
- 18. *Coasters*
- 20. Cushions
- 22. Enamel Pins
- 24. Iron on patches
- 25. Keyrings
- 26. Washi Tape
- 27. Accessories
- 28. Tote Bags
- 32. Prints
- 40. Small Press
- 46. Christmas
- 48. Environment
- 49. Contact



# ABOUT ME

Originally from the Wirral, I graduated from the Manchester School of Art with a degree in illustration in 2012. I now live in Knutsford, Cheshire, with a studio at A4 Studios in nearby Altrincham.

My illustrations are inspired by my passion for wildlife and also my love of fantasy and folklore. I particularly enjoy drawing the weird and wonderful animals that people might never have heard of, whilst helping to raise awareness of endangered species and environmental conservation.

Each illustration starts life as a high detailed pencil drawing which I then colour digitally using my graphics tablet.

I am passionate about promoting caring for our local wildlife and environment and am a proud supporter of the Cheshire Wildlife Trust and the League Against Cruel Sports.



I sell a variety of eco-conscious giftable items featuring my animal characters such as mugs, greeting cards, tote bags, and cushions. All my paper and wooden products are made using responsibly sourced FSC certified and recycled materials, and my packaging is completely plastic free, using biodegradable alternatives where possible.





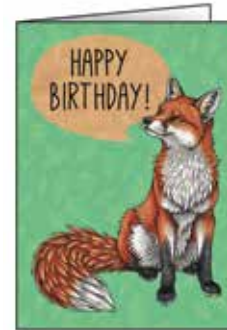
# GREETING CARDS

Each card comes with a brown envelope made from recycled papers, and is blank inside. They can either be sealed in a clear bio-degradable bag made from corn starch, or completely bagless with a peelable eco sticker which holds the envelope and the card together.

I have two sizes of card, 150 x 150mm and 177 x 127mm. They are printed in the UK on FSC certified smooth white 300gsm card. The FSC certified logo is printed on the reverse.



127 X 177MM CARDS



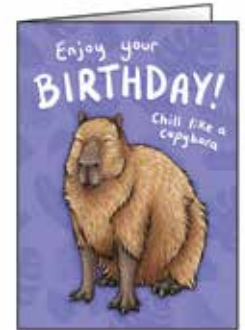
Red Fox  
Happy Birthday



Giraffe Happy  
Birthday



'To My Otter Half'



Capybara  
Birthday



Wolf & Fox  
Anniversary



Fox & Vixen  
Anniversary



Bear & Fox  
Valentine's



Wolf & Fox  
Valentine's



Wolf Song  
'I Miss You'



Badger Couple  
Anniversary



'Nice Hair'



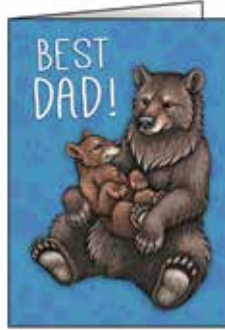
## 127 X 177MM CARDS



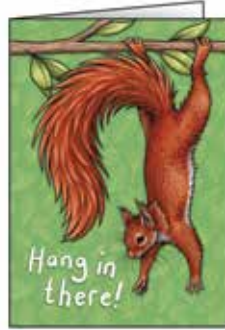
Wolf Song  
'I Love You'



Tigers 'Best Mum'



Bears 'Best Dad'



Red Squirrel  
'Hang in There!'



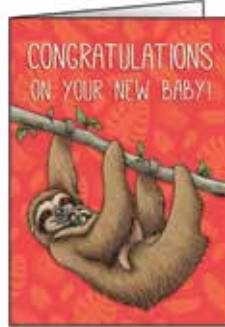
Giant Anteaters



Penguin  
Obsession



Graduation Fox



Sloths New  
Baby



'Everything Whale  
Be Alright'



'Jackaloafs'



'You're Pawsome!'

## 150MM X 150MM CARDS



Badger Couple



Fox Couple



Bear Couple



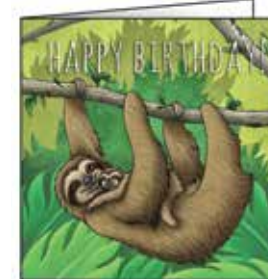
Owl Couple



Rabbit 'Good Luck'



Aye Aye 'You're  
my kind of Weird'



Sloths Birthday



Velociraptors Birthday



Red Panda Birthday



Magpies 'Four for a Boy'



'Bee Mine'



Binturong



# NOTEBOOKS

My notebooks are A5 (21 x 14.8 cm) with 48 lined pages.

The cover is made from 300gsm white card and the inner pages are made from recycled 80gsm lined paper. Printed on FSC certified papers.

The inside covers are also printed with a pattern, and each notebook comes in a neat little wrap to keep it tidy.



*Wolf Song*



*Wolf & Fox*



*Sumatran Tigers*



*Red Fox*



*Otters*



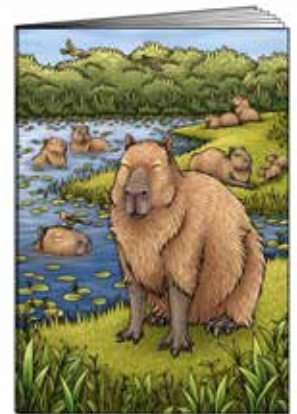
*Kitsune*



*Giraffe*



*Ocelot*



*Capybaras*





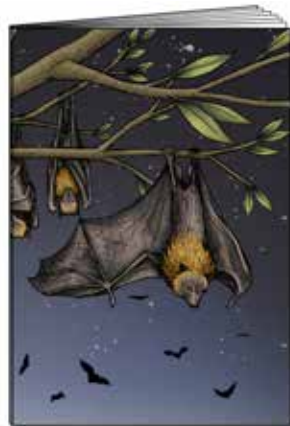
Sloths



Badgers At Fall



Red Squirrel



Fruit Bats

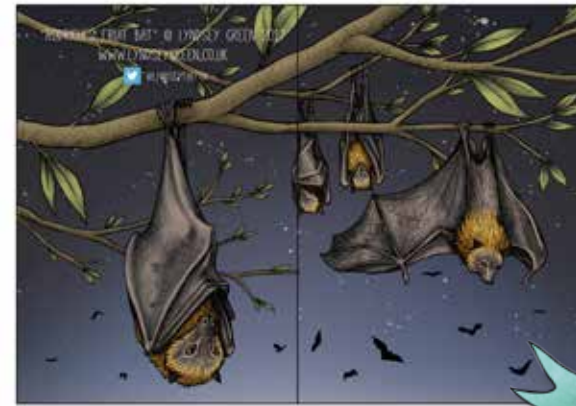


Red Panda



Midnight Menagerie

These designs span the whole cover.



Rodrigues Fruit Bat



Red Panda



Midnight Menagerie





# KITCHENWARE

## MUGS

My ceramic mugs are microwave and dishwasher safe. Each mug comes with a sturdy cardboard gift box to protect it from breakages. The designs are printed on both sides of the mug.

9.2cm (h) x 8cm (d)



## COASTERS

My coasters have rounded corners and a glossy, wipeable finish. They are made from FSC certified wood.

9cm x 9cm





# MUGS



*Badger Couple*



*Bumblebee*



*Sumatran Tiger*



*Wolf & Fox Couple*



*Jackalofs*



*Red Fox*



*Binturong*



*Rothschild's Giraffe*



*Capybara*



*Red Panda*



*Scottish Wildcat*



*Three-Toed Sloths*

All mugs come with a matching protective gift box.

The designs on this page wrap around the mug.



*'Nice Hair'*



*Rodrigues Fruit Bats*



*Jackalopes of the World*



*Magpies*



*African Painted Dogs*



*Bunny Binky*



*Asian Small-Clawed Otters*





# COASTERS



*Badger Couple*



*Rodrigues Fruit bats*



*Wolf Song*



*Capybaras*



*Meerkats*



*Kitsune*



*Sun Bears*



*Blue Tits*



*Three-Toed Sloths*



*Bumblebee*



*Red Panda*



*Caracal*



*Midnight Menagerie*



*Lion*



*Rothschild's Giraffe*



*Barn Owl*



*African Painted Dog*



*Otters*



*Ocelot*



*White Kitsune*



*Red Fox*



*Tanukis*



*Little Blue Penguins*



*Sumatran Tigers*



# CUSHIONS



Red Fox



Capybaras



Watership Down



Kitsune



Red Panda



Midnight Menagerie

**BESTSELLER!**

My cushion covers are made from beautifully soft faux suede and zip closed along the bottom.

They can be provided with a cushion inner or as just covers.

Printed in the UK using eco-friendly inks.

Machine washable at 30°C.

Approx. 45 x 45cm.

**Wolf & Fox**



Otters



Rodrigues Fruit Bats



Jackaloafs



Wolf Song



The Assembly



White Kitsune



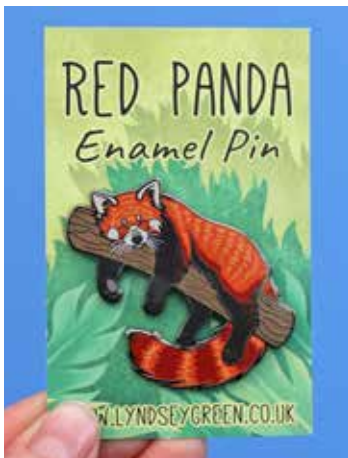
# ENAMEL PINS

My enamel pins are a consistently best selling product. They range from 40-55mm at the widest point, with rubber clutch fixings on the back. Each pin comes fixed to a backing card.

Some pins feature special effects, such as my El-ahrairah pin which has glitter detail.



My top selling pin Vulpecula is finished with rainbow plating, giving a wonderful variation of colours! My newest set of kitsune pins and my red panda pin have screen-printed details.



Some pins also include donations to a relevant charity such as my Binturong pin (ABConservation) and my Prince Rainbow pin (MindOut),

New pins can be created from many of my illustrations. Minimum order quantities depend on availability at the time of ordering.

# WOODEN PINS

Wooden pins are made from 4mm thick maple veneered MDF. They are very eco-friendly, made from FSC certified wood which means they come from sustainable, responsibly managed woodlands.





# IRON ON PATCHES

Woven patches are 70mm wide with an iron on reverse for easy application.



# WOODEN KEYRINGS



*Capybara and Jackaloaf*

Wooden keyrings are approximately 4mm thick and 65mm at the widest point, and come on a silver star shaped clasp. They are printed in the UK on FSC certified wood and are natural wood on the reverse.



*Wolf & Fox*



*Cross Kitsune*



*White Kitsune*



*Red Kitsune*



*Red Panda*



*Tanuki*



# WASHI TAPE



*Kitsunes*



*Farthing Wood*



*Jackalopes*

Paper washi tapes are a fun alternative to plastic tape. Each roll of tape is 15-20mm wide and 10m long. They come in eco-friendly packaging - wrapped in recyclable paper rather than the usual plastic shrink wrapping.



*Spooky Fox*



*Red Pandas*

# ACCESSORIES

I also offer a range of smaller, lower cost accessories including badges, postcards, stickers and bookmarks.

- Badges are 44mm wide with steel pin back.
- Bookmarks are double sided, printed on 300gsm recycled board.



- Stickers come in various sizes and are weather resistant, printed on heavy duty vinyl with a strong adhesive backing. Some are also holographic!
- Postcards are 105 x 148mm and printed in the UK on FSC certified card.





# TOTE BAGS

My tote bags measure approx 37cm x 42cm with long handles. Each bag comes folded in a neat little wrap to make it easier to store and display. Depending on stock availability they are made from cotton or recycled plastic.

The cotton bags are produced from a sustainable crop of cotton, grown without pesticides, herbicides and fertilisers. They also carry the Fairtrade Cotton Mark which means that the cotton farmers must meet Fairtrade Standards.

The RPET bags are made with “natural” coloured Redivivus fabric, which is made from recycled, post-consumer plastic which was destined for landfill or taken from the ocean. They have a smooth cotton feel, but use 70% less water to produce than a conventional cotton bag!



*Red Panda*



*Red Fox*



*Badgers*



*Jackaloafs*



*Rodrigues Fruit Bats*



*Jackalopes of the World*



*African Lion*



*Otters*



*Red Squirrel*







*Tanuki*



*Capybara*



*Binturong*



*Rothschild's Giraffe*



*Bumblebee*



*Three-Toed Sloths*



*Sumatran Tigers*



*Cross Kistune*



*Wolf & Fox Couple*

NEW DESIGNS!



*White Kitsune*



*Red Kitsune*

Every tote bag comes folded, with a brown paper wrap to keep it neat and easier to store and display.





# PRINTS

Prints of my illustrations are available in A4 and A3 sizes. They are printed on lovely thick 300gsm lightly textured card and come in a bio-degradable cello bag made from corn starch, with a protective cardboard backing. The card is FSC certified and printed in the UK. All prints are signed by me on the reverse.

I have a wide range of illustrations, if there is one you are interested in and cannot see in this catalogue please get in touch!



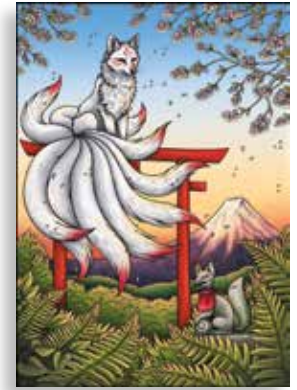
*Wolf & Fox*



*Black and White  
Ruffed Lemurs*



*Blue Tits*



*Kitsune*



*Rodrigues Fruit Bats*



*Watership Down*



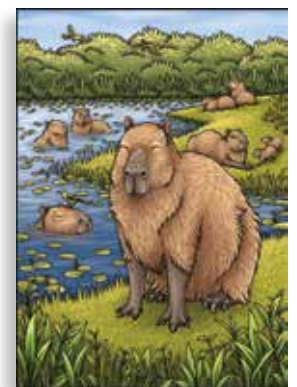
*Wolf Song*



*Sumatran Tigers*



*Tanukis*



*Capybaras*

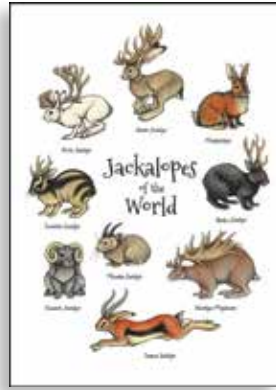




*The Assembly*



*Red Fox*



*Jackalopes*



*Giant Anteaters*



*Badgers At Fall*



*The Bear*



*Otters*



*Nekomata*



*Red Pandas*



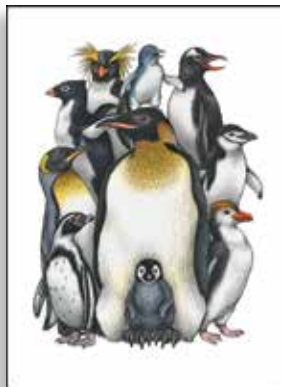
*Meerkats*



*Bran the Bunny*



*Caracal*



*Penguin Obsession*



*Sun Bears*



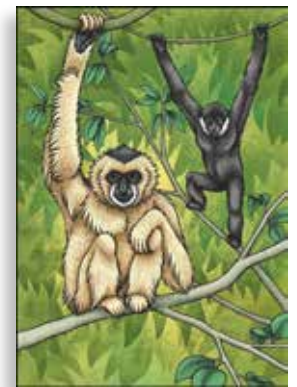
*Raindance*



*Totem*



*Geckos*



*White Cheeked Gibbons*





*El-Ahraitah*



*Snow Leopard*



*Scottish Wildcat*



*Binturong*



*Pallas's Cat*



*Bear and Fox*



*Red Panda*



*Barn Owl*



*Nice Hair*



*Badger Couple*



*Bear Couple*



*Native Birds of New Zealand*



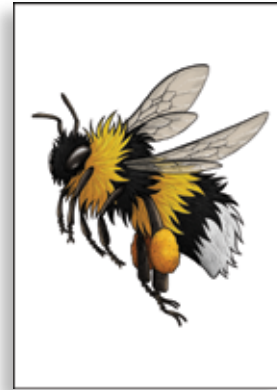
*Midnight Menagerie*



*African Painted Dog*



*Velociraptors*



*Bumblebee*



*Pangolin Mum*



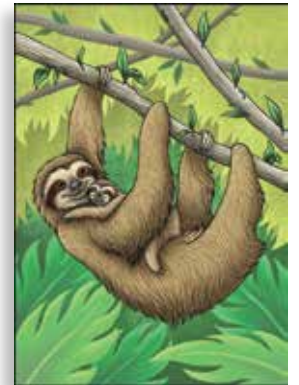
*Pangolins*



*Owl Couple*



*Rothschild's Giraffe*



*Three-Toed Sloths*



*Winter Fox*



*Mistletoe Kisses*



*Winter in the Forest*



# GICLÉE PRINTS

All of my illustrations can also be produced as higher quality giclée prints. These are printed using lightfast pigment inks on 300gsm 100% cotton archival matt finish paper, giving them a longevity of approx. 100 years under glass. Full colour and darker illustrations such as 'Midnight Menagerie' and 'Watership Down' look great as giclée prints as the colours come out so rich!

Print sizes larger than A3 or custom sizes can be ordered in as giclée prints.



*American Black Bears*



*Red Squirrel*



*Aye Aye*



*Sumatran Tiger*



*Genet*



*Jaguarundi*



**JACKALOAFS**

*Jackaloafs*



*Griffins of the World*



*Humpback Whale*





# SMALL PRESS

## Foxy Feb Zine

In February 2014 the League Against Cruel Sports launched “Foxy Feb” and shared a fox fact every day to broaden the understanding that foxes are not pests to be managed by hunting. I illustrated each of these facts and compiled them into a zine.

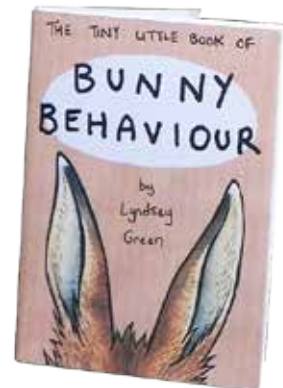
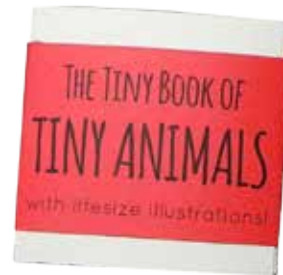
The zine is A6 and has 36 pages. It is printed on recycled papers and handmade by me. For each zine sold I donate 50p to the LACS to help protect our foxes.



## Tiny Animals Zine

My tiny animals zine is a concertina (5 x 5cm when folded) featuring 8 of the world's smallest animals, printed roughly life-size to show how incredibly tiny they are! One side shows the animals with some facts on the reverse.

This zine reaches a total length of 40cm when unfolded. Each zine is hand cut and folded, and comes in a colourful sleeve to keep it together.



## Bunny Behaviour Zine

This tiny little book gives a brief explanation of some common rabbit habits. It is created from a single sheet of folded A4 paper to create an A7 booklet. It has 6 pages and unfolds to reveal an A4 illustration on the reverse.

## Jackalopia Zine

The jackalope is a mythical creature from North American folklore, traditionally described as a jackrabbit with antlers. This inspired me to create lots of different kinds of jackalope that might have adapted to other climates by combining animals which live in a similar environment, from the savannah to the Arctic tundra!

This A6 zine has 20 pages and is printed on recycled papers. I also have a range of products such as badges, tote bags and mugs featuring my jackalope designs.

## Jackalopia Inktober Zine

In 2017 I took part in 'Inktober', a worldwide art challenge to create a different ink drawing every day in October. Each day is inspired by a single word from the official Inktober prompts list. I couldn't resist using jackalopes as my focus to create an extension to the Jackalopia!

This A6 zine has 36 pages and is printed on recycled papers.





## Fauna Fusions

Fauna Fusions was a fun project I started to try and brighten up the gloomy times of lockdown. I filled a bowl with a big list of amazing animals and selected three at random each time to combine into a new creature. This zine contains the nine new animals I created along with some fun “facts”!

This zine is 20 pages long and made at A6 size (approx 15cm x 10.5cm). It is printed in the UK on FSC certified papers.



## Red Panda Zine

This little zine contains lots of fun facts all about the amazing red panda, shared by Red Panda Network in celebration of their 15 year anniversary of incredible red panda conservation work!

This zine is 20 pages long and made at A6 size (approx 15cm x 10.5cm). It is printed in the UK on recycled FSC certified papers. I will also be donating 50p from the sale of each zine to Red Panda Network.



## A to Z of Feliformia

The A to Z of Feliformia is my first illustrated book, which I self-published in 2018 funded by Kickstarter.

Feliforms are the cat-like carnivores, but that doesn't mean this book is only about lions and tigers. They come in all shapes and sizes and live in a vast range of habitats from tundra to desert! From tiny mongooses to sabre-toothed cats, I included learn cool facts alongside hand-drawn illustrations about this amazing group of animals in the A to Z of Feliformia.

These books are printed in the UK on FSC certified paper. Each book is an A4 size (297mm x 210mm) paperback with 32 pages.





## Gryphonology

Griffin-like creatures are found in many different cultures dating back thousands of years. I imagined how species of griffin could have adapted to live in different climates across the globe. All my griffins are based on real animals that live in the same part of the world, for example, the Himalayan griffin is half bearded vulture and half snow leopard, both of which can be found in this region. Most of the facts are also gleaned from these animals, with a little exaggeration and magic thrown in of course!



This zine is 20 pages long and made at A5 size (approx 21cm x 14.8cm). It is printed in the UK on FSC certified papers. The cover is printed on 300gsm silk finish card, and the inside pages are printed on 130gsm silk finish paper.



## Adventures in Japan

Adventures in Japan is a collection of photos and sketches from my travels in Japan!

It includes lots of tips and recommendations for anyone planning a trip themselves, including places to visit and eat around the five main cities we stayed - Tokyo, Kyoto, Osaka, Nagoya and Hiroshima - including short trips and longer day trips.



This zine is 32 pages long and made at A5 size (approx 21cm x 14.8cm). It is printed in the UK on FSC certified papers.







# CHRISTMAS



My festive range features a collection of animal favourites in winter scenes. Most of my products can be produced with these designs for the run up to Christmas, such as coasters, tree decorations and greeting cards.

This section features my current range of festive illustrations. Every year I create a new design for Christmas to keep my range fresh and exciting.



My gift wrap set features my Arctic Circle illustrations of a polar bear, snowy owl, Arctic fox and Arctic hare. This set includes two sheets sized 70 x 50cm and two matching tags.

The paper is printed on FSC certified, 115gsm silk finish paper. It comes neatly folded.

## CHRISTMAS CARDS



*Winter Badger*



*Mistletoe Kisses*



*Winter in the Forest*



*Christmas in the Burrow*



*Snowfight*



*Jackalope Sleigh*



*Winter Foxes*



*Snowbun*



*A Winters Kiss*

*Christmas card bundles are available as packs of 8, comprising 2 each of 4 different designs and includes a £1 charity donation per pack sold.*



# GO GREEN!

I am striving to remove as much unnecessary packaging as possible from my products. I post everything plastic free using bio-degradable, recycled and recyclable materials.

When necessary I use clear bio-degradable bags to protect my work. These are made from cellulose and are fully compostable.

All of my paper and wood products are made from FSC certified papers, meaning that the materials come from responsibly managed forests.



*We went plastic free with these greeting cards going to Wellington Zoo in New Zealand.*

# GET IN TOUCH!

I am happy to take orders as big or small as you like. Some items may have minimum order quantities depending what is in stock at the time of ordering.

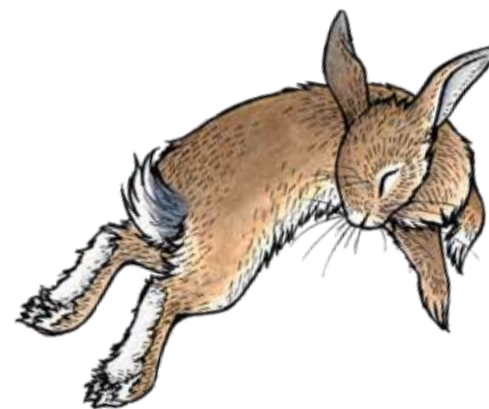
You can also visit my online shop for more information on my current range:  
[www.lyndseygreen.co.uk/shop](http://www.lyndseygreen.co.uk/shop)

My illustrations can be printed on different products not featured in this catalogue. If you'd like to discuss other options or commissions for new artwork please get in touch.

Shipping costs will be confirmed at the point of order.

Thank you for your time, I look forward to hearing from you!

email: [illustration@lyndseygreen.co.uk](mailto:illustration@lyndseygreen.co.uk)







[www.lyndseygreen.co.uk](http://www.lyndseygreen.co.uk)  
[illustration@lyndseygreen.co.uk](mailto:illustration@lyndseygreen.co.uk)

Printed in the UK on FSC certified paper